



SPECIFICATIONS, LISTINGS AND APPROVALS

Available Diameters: 3/16" & 1/4"

Nail Material: Carbon Steel or **STAINLESS STEEL 304**

Nail Finish: Zinc plated per ASTM B633-85 SC1 Type 1

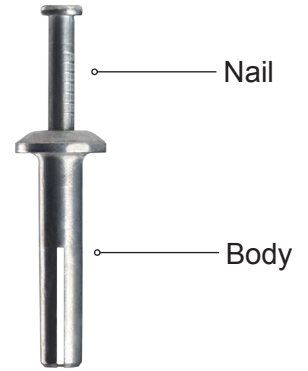
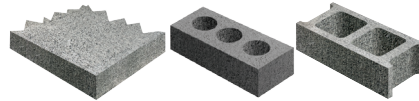
Body Material: Die Cast Zinc Alloy / Plain polish. ASTM B240-10 & 13

Mechanical Properties: Proof load as specified by FF-S-325, Group V, Type 2, Class 3

KEY FEATURES & BENEFITS

- ▶ One-Step installation: Anchor nominal size = Drill bit size
- ▶ Fast & easy to install
- ▶ Must be installed through fixture

MATERIALS



INSTALLATION SPECIFICATIONS AND PERFORMANCE DATA

SAFE WORKING LOAD

Cobra code	SKU	Industrial Pack / Qty	Material	Anchor size	Drill Size	Recommended Drill Depth	Minimum Embedment	Recommended Embedment	Concrete strength: 2,000 psi				Concrete strength: 4,000 psi			
									TENSION lb	SHEAR lb	TENSION lb	SHEAR lb	TENSION lb	SHEAR lb	TENSION lb	SHEAR lb
350CD220	381C	100	Carbon Steel	3/16" x 7/8"	3/16"	1-1/8"	5/8"	3/4"	145	100	155	100				
350CD422	382C	100	Carbon Steel	1/4" x 3/4"	1/4"	1"	5/8"	5/8"	130	85	215	115				
350CD425	383C	100	Carbon Steel	1/4" x 1"	1/4"	1-1/4"	3/4"	3/4"	195	150	220	160				
350CD427	384C	100	Carbon Steel	1/4" x 1-1/4"	1/4"	1-1/2"	3/4"	1"	240	195	260	210				
350CD436	385C	100	Carbon Steel	1/4" x 1-1/2"	1/4"	1-3/4"	3/4"	1-1/4"	285	200	295	250				
350CD443	386C	100	Carbon Steel	1/4" x 2"	1/4"	2-1/4"	3/4"	1-1/2"	290	210	310	260				
350CD445	387C	100	Carbon Steel	1/4" X 2-1/2"	1/4"	2-3/4"	3/4"	1-3/4"	310	240	320	290				
350CD450	396C	50	Carbon Steel	1/4" X 3"	1/4"	3-1/4"	3/4"	2"	320	250	320	305				
360CD220	395C	100	Stainless Steel	3/16" x 7/8"	3/16"	1-1/8"	5/8"	3/4"	145	100	155	100				
360CD422	394C	100	Stainless Steel	1/4" x 3/4"	1/4"	1"	5/8"	5/8"	130	85	215	115				
360CD425	388C	100	Stainless Steel	1/4" x 1"	1/4"	1-1/4"	3/4"	3/4"	195	150	220	160				
360CD427	389C	100	Stainless Steel	1/4" x 1-1/4"	1/4"	1-1/2"	3/4"	1"	240	195	260	210				
360CD436	390C	100	Stainless Steel	1/4" x 1-1/2"	1/4"	1-3/4"	3/4"	1-1/4"	285	200	295	250				
360CD443	391C	100	Stainless Steel	1/4" x 2"	1/4"	2-1/4"	3/4"	1-1/2"	290	210	310	260				
360CD445	392C	100	Stainless Steel	1/4" X 2-1/2"	1/4"	2-3/4"	3/4"	1-3/4"	310	240	320	290				
360CD450	393C	50	Stainless Steel	1/4" X 3"	1/4"	3-1/4"	3/4"	2"	320	250	320	305				

INSTALLATION INSTRUCTIONS

- Drill a hole into the masonry. To install soft material, such as wood, drill through both material simultaneously. **Drill the hole 1/4" deeper than the recommended embedment (indicated in the table above).**
- Clean the hole using a dust blower or compressed air. The hole must be free of residual dust and debris. A cleaner hole will directly improve the performance of the anchor.
- Insert the Drive Nail Anchor through the object you need to affix and into the hole.
- With a hammer, hit the nail until the anchor is set tightly against the item to be fastened. Do not over-drive the nail into the body as this could damage the anchor.

CAUTION : Always wear safety glasses. Follow the drill manufacturer's safety instructions. Use only solid carbide-tipped drill bits meeting the ANSI B212.15 diameter standard.

NOTES:

- Technical data provided is for the use of a qualified technician and/or design engineer.
- **Data used by persons not qualified can cause serious damage, injury or even death.**
- Safe working loads represent a safety factor of 4:1 from ultimate test loads.
- To meet the recommended load capacity, use the recommended style and drill size.
- **THE HOLE DEPTH MUST BE 1/4" DEEPER THAN THE RECOMMENDED EMBEDMENT.**
- Concrete must be uncracked.
- This anchor is not recommended for installations at an angle or for overhead use.
- Spacing and edging minimums are recommended to prevent concrete deterioration:

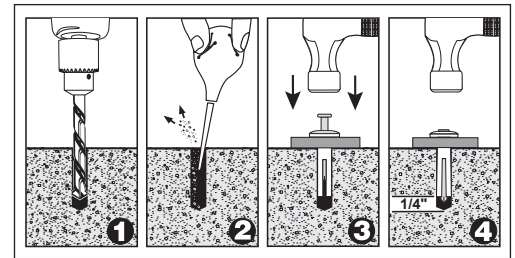
For 1/4" anchors, the distances are:

1-1/4" minimum spacing between anchors
1-1/2" minimum distance from the edge

For 3/16" anchors, the distances are:

1" minimum spacing between anchors
1-1/8" minimum distance from the edge

- Tension and shear loads may vary according to the quality of the concrete.



TOOLS REQUIRED



July 21st, 2017